



LILY & LALI

DULCE PRIDE

A PRODUCT OF SAKSHI GROUP

Anarkali

NEW ARRIVAL
2025
COLLECTION



NEW ARRIVAL
2025
COLLECTION

LILY & LALI

DULCE PRIDE

A PRODUCT OF SAKSHI GROUP


Anarkali



Half lined abbas, here with
embroidery, detailed dices and work
over traditional work (Juttayee)





24701 



fuel your ethnic love with embroidery detailed dress and make your wardrobe worth investment!



LILY & LALI[®]
GULS PRIDE
A PRODUCT OF **frond** GROUP



LILY LALI®

a brand by **Chiranjeev**

Be it a party, event,

festival or wedding,

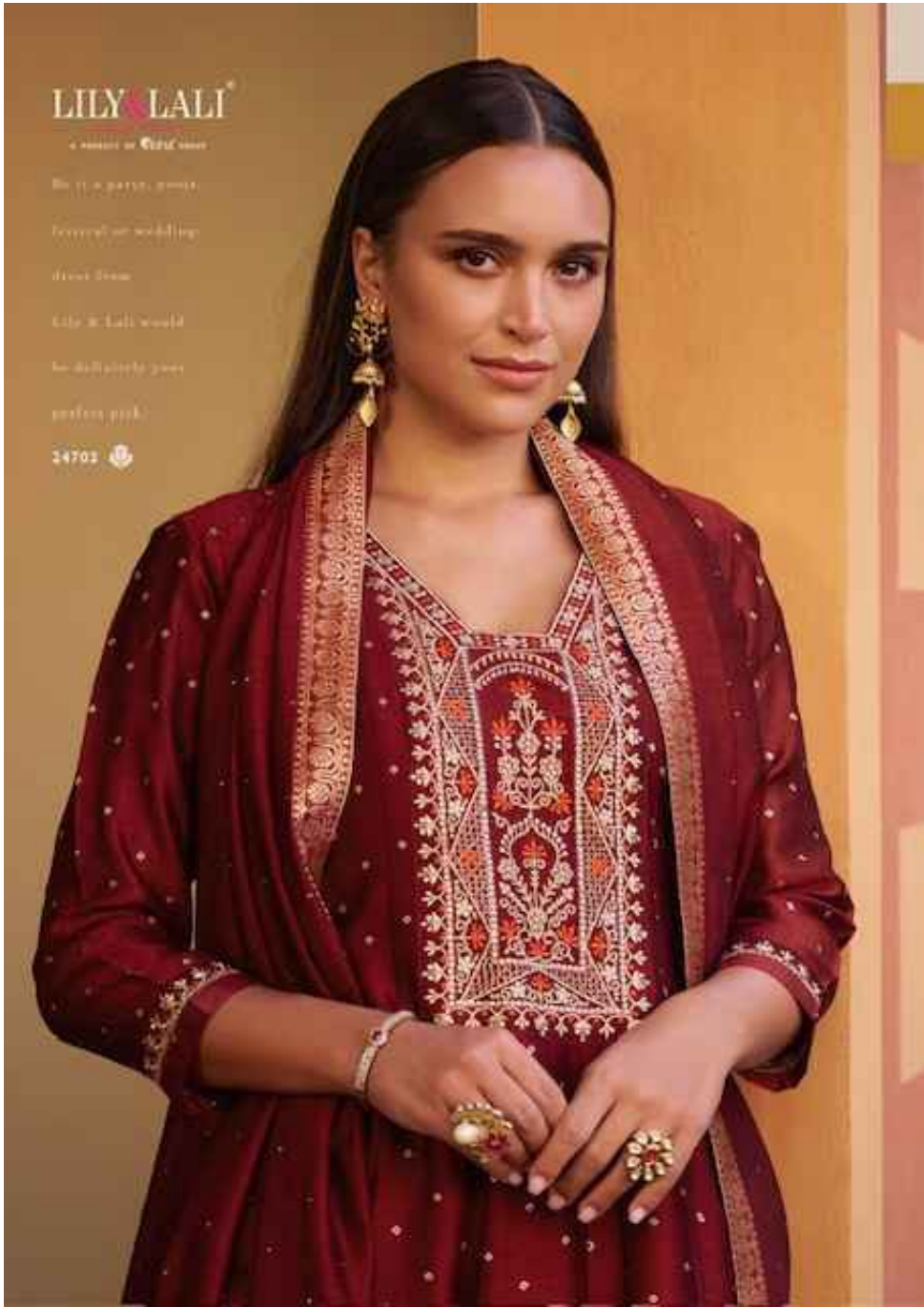
there's time

Lily & Lali would

be delightfully yours

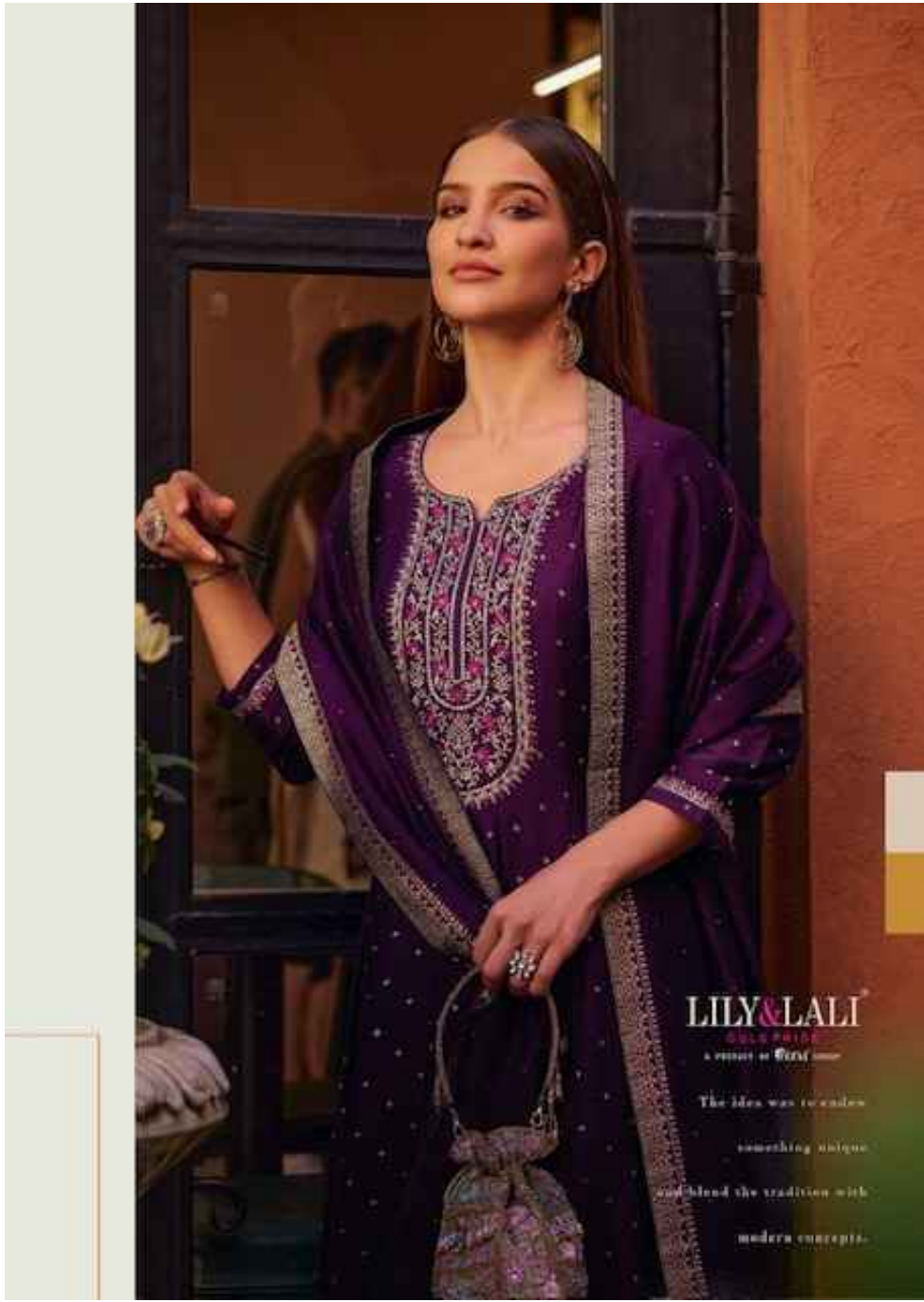
perfect pick.

14703 









LILY & LALI

GOLD PRIDE
a sister of GIFT

The idea was to create
something unique
and blend the tradition with
modern concepts.



LILY & LALI[®]
GULS PRIDE
A PRODUCT OF *fiona* GROUP

minimal and delicate work detail lends you an elegant and urbane look to astonish occasion.



 24704

LILY & LALI[®]
GULS PRIDE
A PRODUCT OF Sirona[®] GROUP



THE TRENDIEST SHOWCASE

When you see this dress, be assured, it would be the perfect statement piece in the look book.

24705 



LILY & LALI[®]
SUSA PAKISTAN
A MEMBER OF GOSWAMI GROUP

When you see this dress,
be assured, it would
be the perfect statement
piece in the look book.

🌹 24705

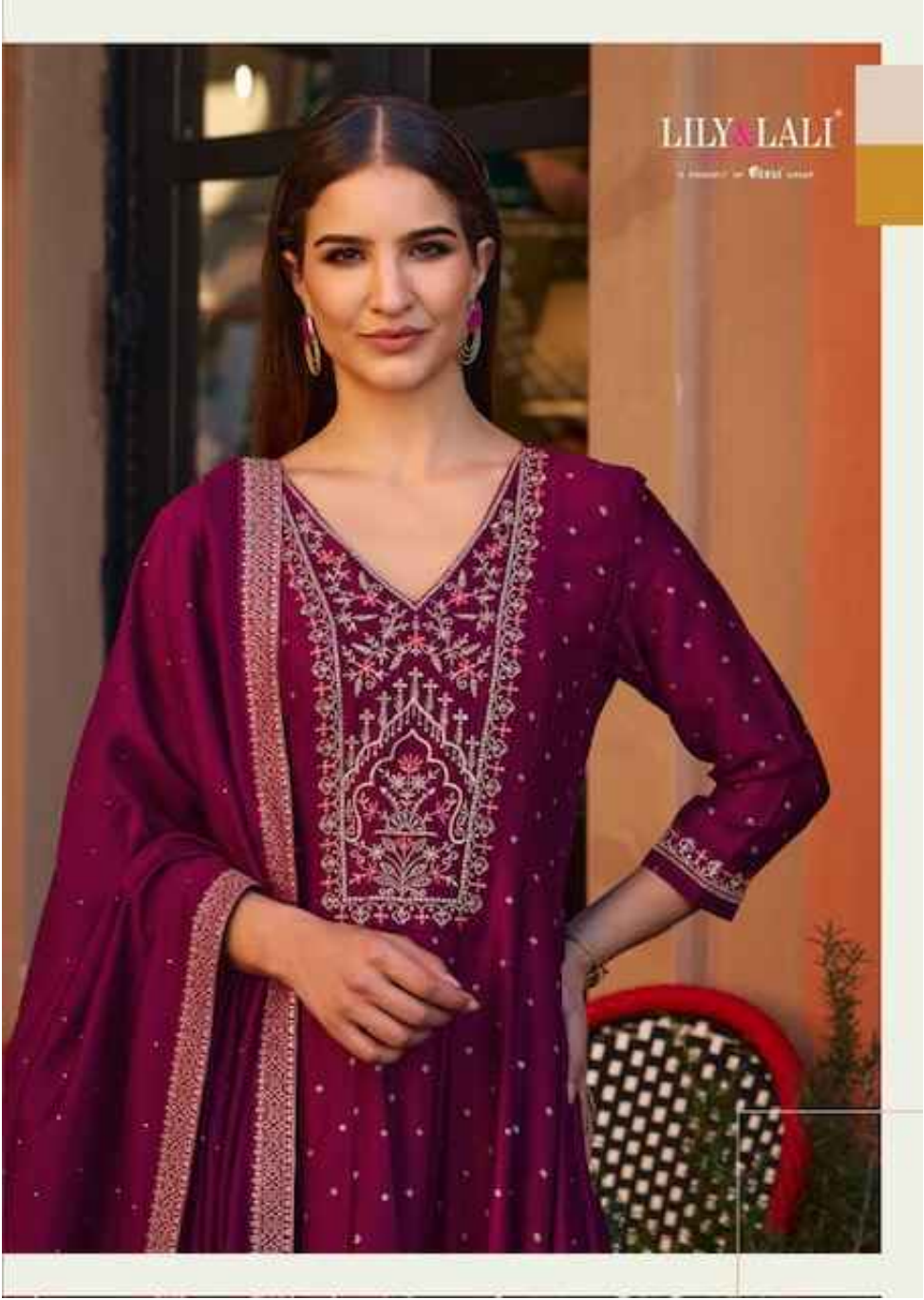






This festive season
this festive season... this is
with the newest trends
where there's always
with eternal grace!

24708



24701



24701



24703



24704



ATIMELESS

LILY & LALI

CULS PRIDE

PRODUCT OF FIELD GROUP

Anarkali

