

# ZAHRA RUBAB VOL-2



ALK-6024



ALK-6025



ALK-6026



# ZAHRA RUBAB VOL-2



ALK-6024



ALK-6025

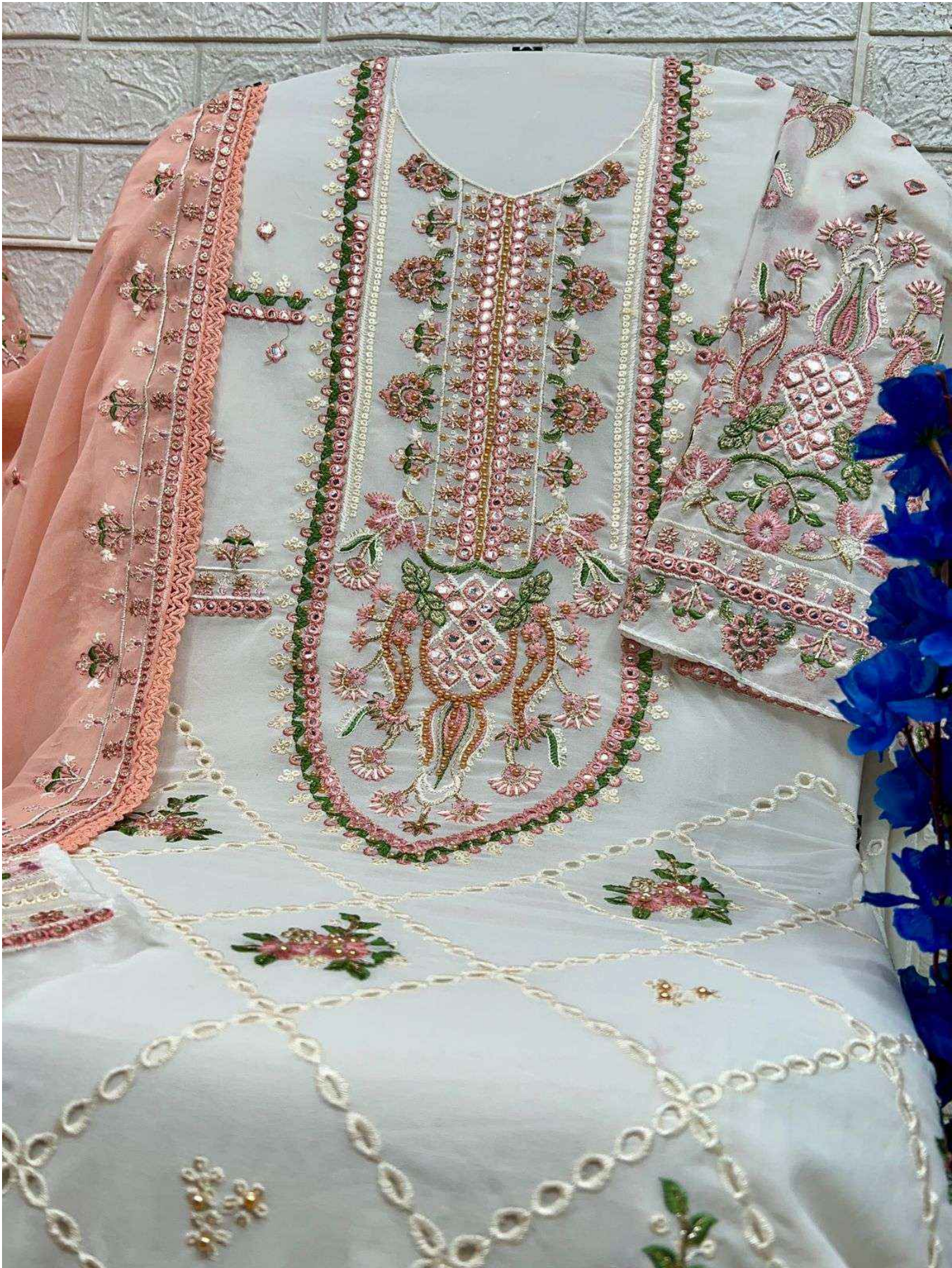


ALK-6026













**Back  
Work**











**Back  
Work**































**ALK**<sup>®</sup>  
**AL KHUSHBU**<sup>®</sup>

**ALK-6026**

- TOP** Fox Georgette with Heavy Embroidery (cut 2.50)
- BOTTOM-INNER** Dull Santoon (cut 4.25)
- DUPATTA** Fox Georgette with Heavy Embroidery (cut 2.40)

**CARE INSTRUCTIONS**

- ☐ Dry clean only
- ⚠ Do not use any bleach or stain removing chemical
- ☐ Iron the fabric at moderate temperature
- ☒ Do not dry fabric in direct sunlight





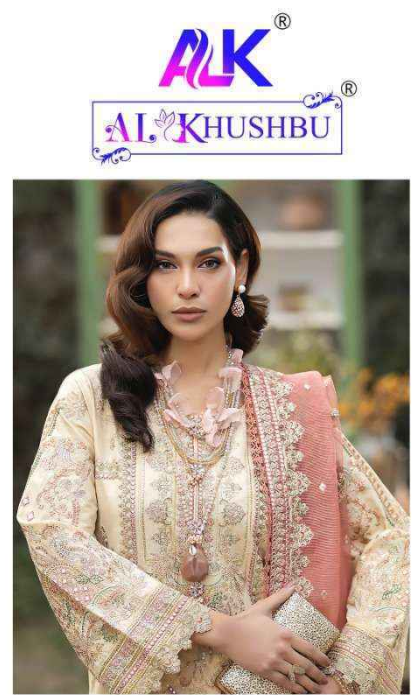
## ALK-6025

- TOP** Fox Georgette with Heavy Embroidery (cut 2.50)
- BOTTOM-INNER** Dull Santoon (cut 4.25)
- DUPATTA** Fox Georgette with Heavy Embroidery (cut 2.40)

### CARE INSTRUCTIONS

- ☐ Dry clean only
- ⚠ Do not use any bleach or stain removing chemical
- ☐ Iron the fabric at moderate temperature
- ☒ Do not dry fabric in direct sunlight





**ALK**<sup>®</sup>  
**AL KHUSHBU**<sup>®</sup>

**ALK-6024**

- TOP** Fox Georgette with Heavy Embroidery (cut 2.50)
- BOTTOM-INNER** Dull Santoon (cut 4.25)
- DUPATTA** Fox Georgette with Heavy Embroidery (cut 2.40)

**CARE INSTRUCTIONS**

- ☐ Dry clean only
- ⚠ Do not use any bleach or stain removing chemical
- ☐ Iron the fabric at moderate temperature
- ☒ Do not dry fabric in direct sunlight





ALK<sup>®</sup>

AL KHUSHBU<sup>®</sup>

ZAHRA RUBAB  
VOL-2



# ZAHRA RUBAB

VOL-2



ALK-6024



ALK-6025



ALK-6026