



Back  
Work





Back  
Work





ALK

AL KHUSHBU









ALK

AL KHUSHBU



ALK

AL KHUSHBU

TOP  
BOTTOM  
DUPAT

SIZE M  
L  
XL







ALK

AL KHUSHBU



# Afifa

VOL-2



ALK-6015



ALK-6016



ALK-6017



**ALK-6017**

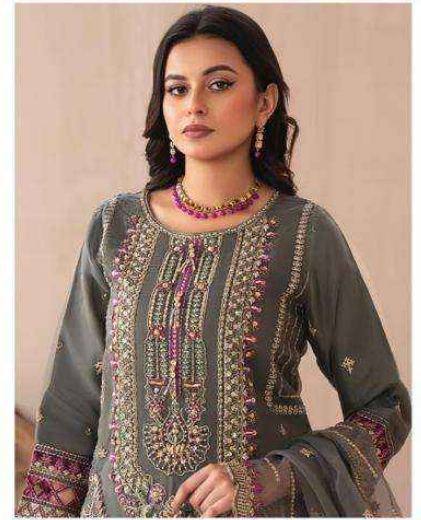
**TOP** Fox Georgette with Heavy Embroidery (cut 2.50)

**BOTTOM-INNER** Dull Santoon (cut 4.25)

**DUPATTA** Fox Georgette with Heavy Embroidery (cut 2.40)

**CARE INSTRUCTIONS**

- ☉ Dry clean only.
- ⚠ Do not use any bleach or stain removing chemical.
- ☐ Iron the fabric at moderate temperature.
- ☒ Do not dry fabric in direct sunlight.



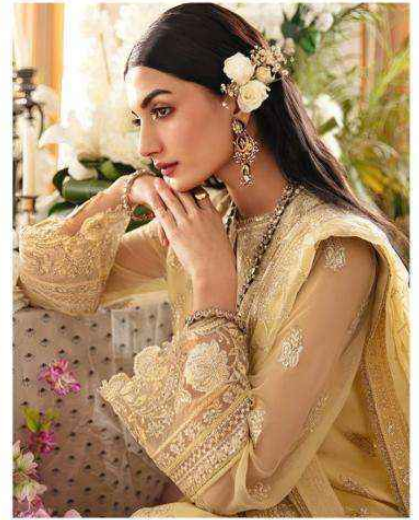
**ALK**<sup>®</sup>  
**AL KHUSHBU**<sup>®</sup>

**ALK-6016**

- TOP** Fox Georgette with Heavy Embroidery (cut 2.50)
- BOTTOM-INNER** Dull Santoon (cut 4.25)
- DUPATTA** Fox Georgette with Heavy Embroidery (cut 2.40)

**CARE INSTRUCTIONS**

- ☉ Dry clean only.
- ⚠ Do not use any bleach or stain removing chemical.
- ☐ Iron the fabric at moderate temperature.
- ☒ Do not dry fabric in direct sunlight.



**ALK**<sup>®</sup>  
**AL KHUSHBU**<sup>®</sup>

**ALK-6015**

- TOP** Fox Georgette with Heavy Embroidery (cut 2.50)
- BOTTOM-INNER** Dull Santoon (cut 4.25)
- DUPATTA** Fox Georgette with Heavy Embroidery (cut 2.40)

**CARE INSTRUCTIONS**

- ☉ Dry clean only.
- ⚠ Do not use any bleach or stain removing chemical.
- ☐ Iron the fabric at moderate temperature.
- ☒ Do not dry fabric in direct sunlight.



ALK<sup>®</sup>

AL KHUSHBU<sup>®</sup>

Afifa

VOL-2

# Afifa

VOL-2



ALK-6015



ALK-6016



ALK-6017