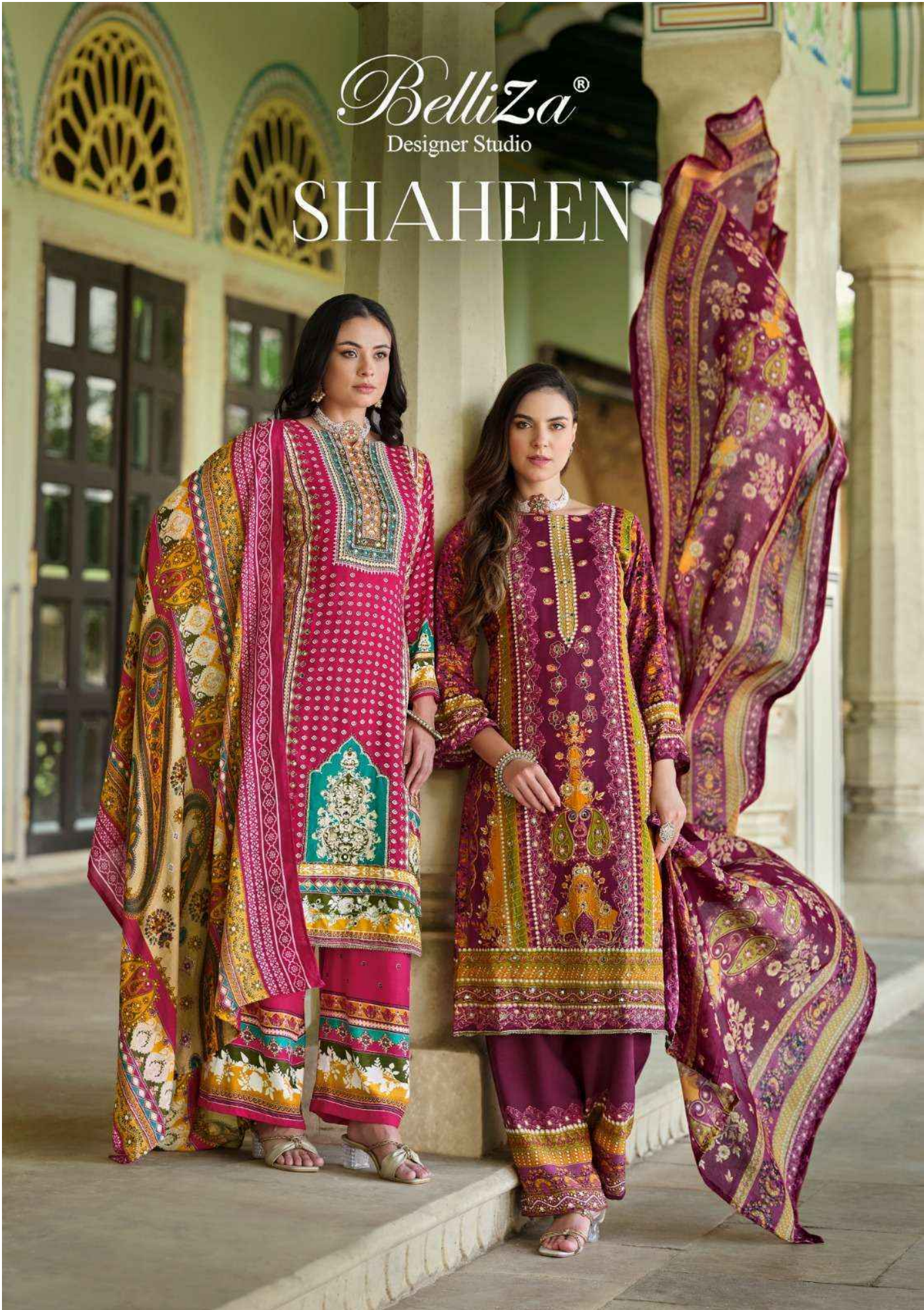


BelliZa®
Designer Studio

SHAHEEN



B



TRENDING
COLLECTION

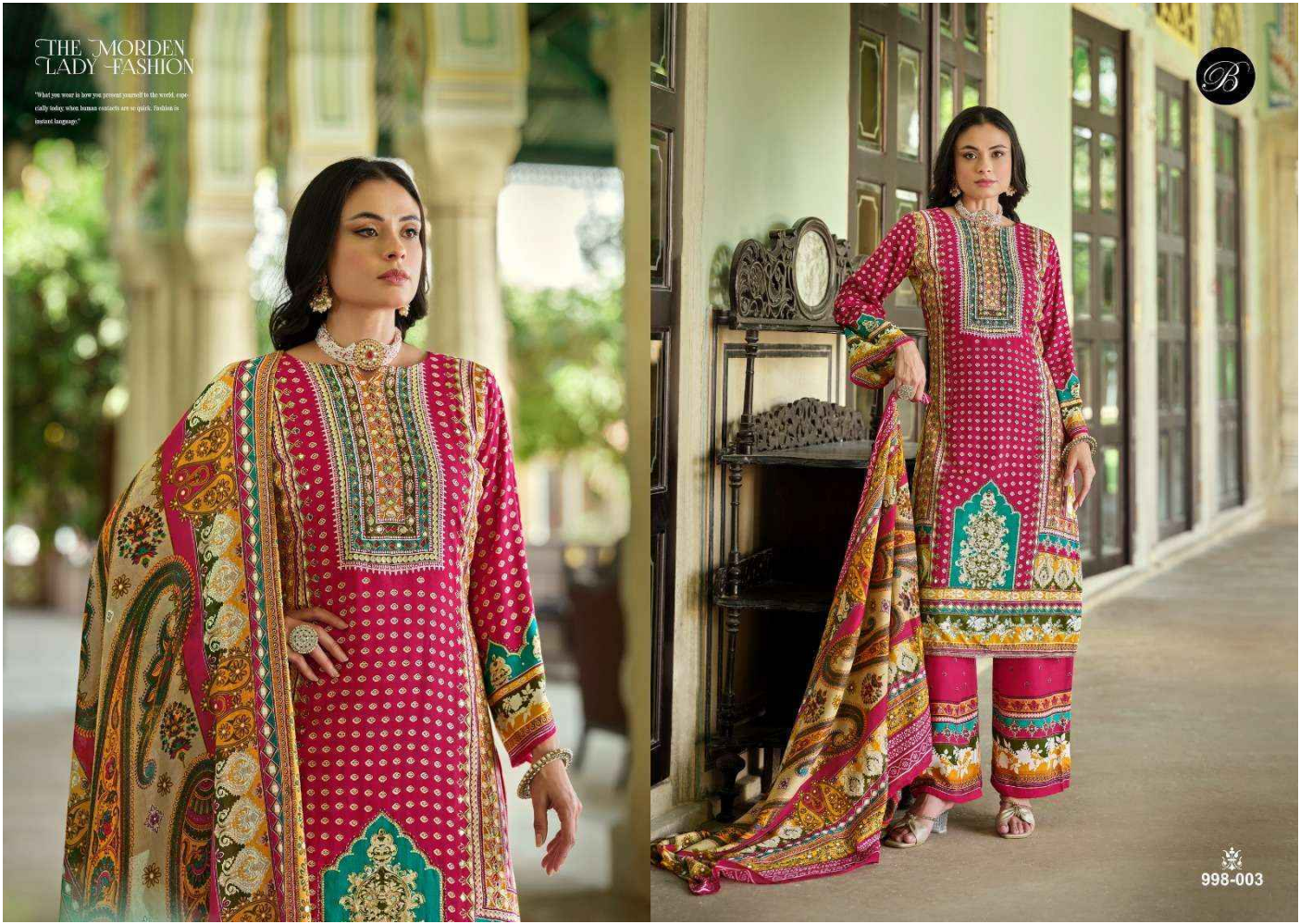
"What you wear is how you present yourself to the world, especially today when human contacts are so quick. Fashion is great inspiration."

998-001

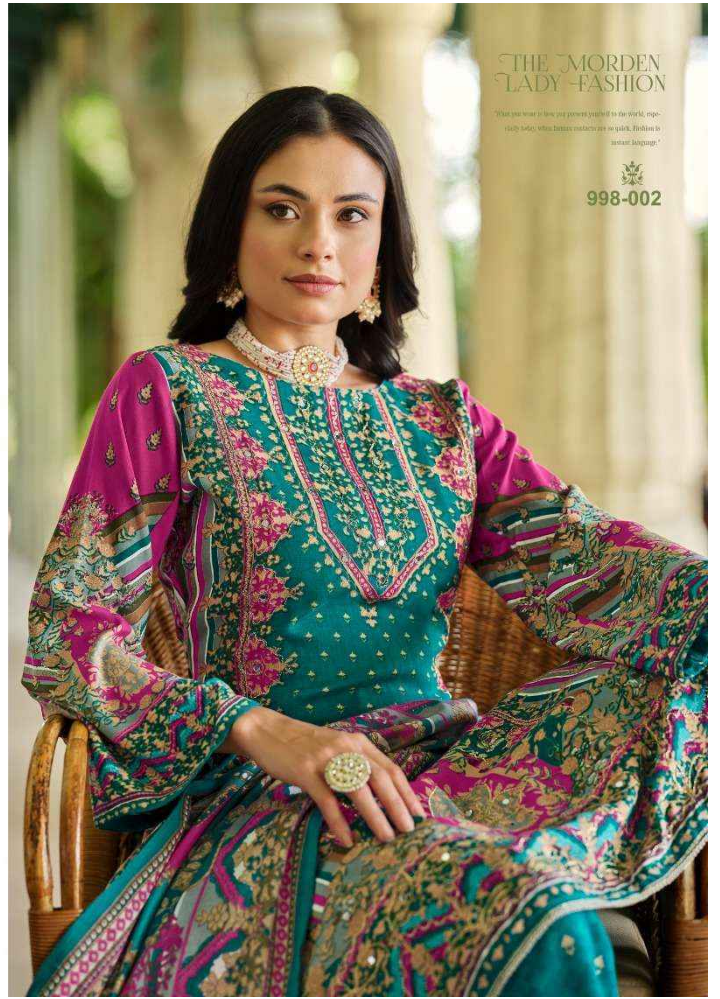


THE MORDEN
LADY - FASHION

"What you wear is how you present yourself to the world, especially today, when business contacts are so quick. Fashion is instant language."



998-003





B



THIS TIME
NEW SEASON

"What you want to buy you present yourself to the world, especially today, when human contacts are so scarce. Fashion is initial language."

998-004



B

998-006



DIFFERENT STYLE

"What you want to see you present yourself to the world, especially today, when human contacts are so quick. Fashion is instant language."



DIFFERENT
DIRCTION

"What you wear is how you present yourself to the world, especially today, when human contacts are so quick. Fashion is instant language."

998-005







DIFFERENT
DIRCTION

"What one wears is how you present yourself to the world, especially today, when business meetings are so quick. Fashion is just not a hobby."



998-007



SHAHEEN



998-001



998-002



998-003



998-004



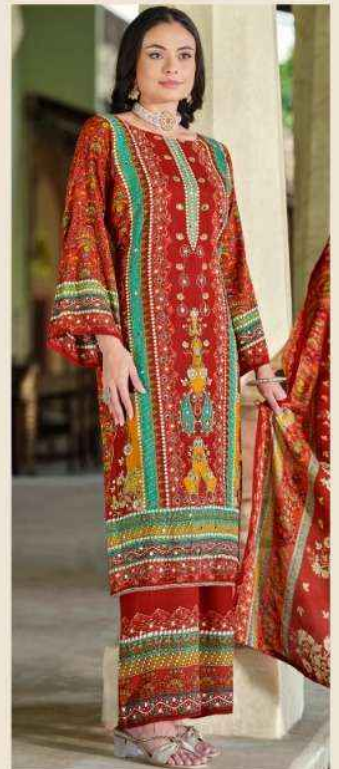
998-005



998-006



998-007



998-008

BelliZa[®]
Designer Studio

SHAHEEN

