

# ZAHRA RUBAB

ALK<sup>®</sup>

AL KHUSHBU<sup>®</sup>



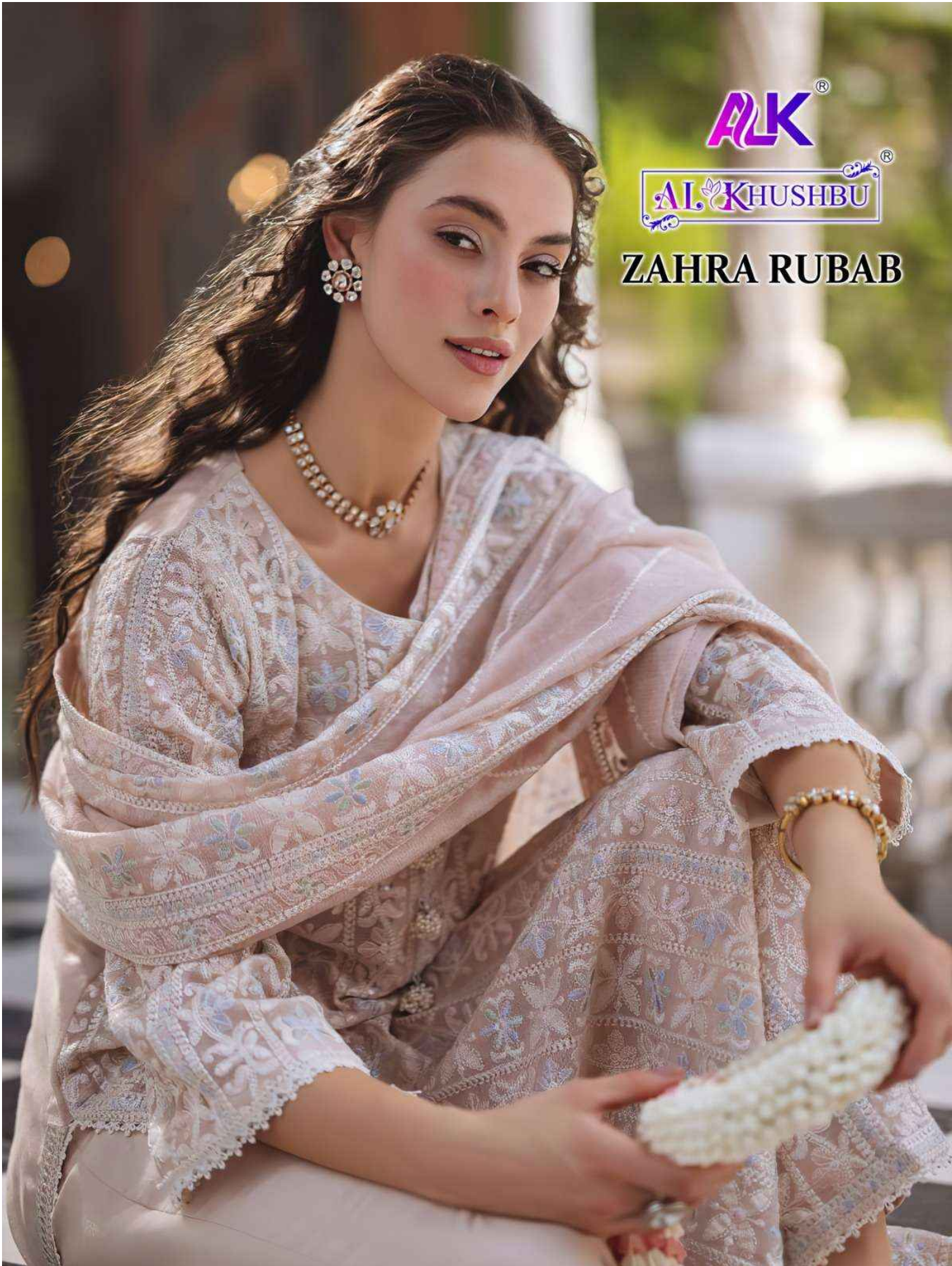
ALK-6030



ALK-6031



ALK-6032



**ALK**<sup>®</sup>

**AL KHUSHBU**<sup>®</sup>

**ZAHRA RUBAB**



**ALK**<sup>®</sup>  
**AL KHUSHBU**<sup>®</sup>

**ALK-6030**

**TOP**

Fox Georgette with  
Heavy Embroidery (cut 2.50)

**BOTTOM-INNER**

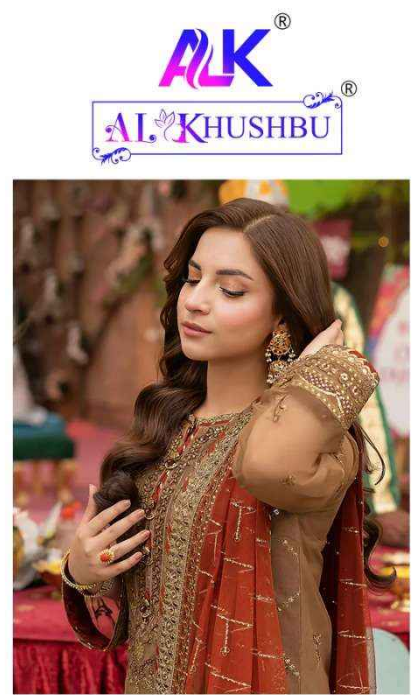
Dull Santoon (cut 4.25)

**DUPATTA**

Fox Georgette with  
Heavy Embroidery (cut 2.40)

**CARE INSTRUCTIONS**

- ☐ Dry clean only
- ⚠ Do not use any bleach or stain removing chemical
- ☐ Iron the fabric at moderate temperature
- ☒ Do not dry fabric in direct sunlight



**ALK**<sup>®</sup>  
**AL KHUSHBU**<sup>®</sup>

**ALK-6032**

- TOP** Fox Georgette with Heavy Embroidery (cut 2.50)
- BOTTOM-INNER** Dull Santoon (cut 4.25)
- DUPATTA** Fox Georgette with Heavy Embroidery (cut 2.40)

**CARE INSTRUCTIONS**

- ☐ Dry clean only
- ⚠ Do not use any bleach or stain removing chemical
- ☐ Iron the fabric at moderate temperature
- ☒ Do not dry fabric in direct sunlight



## ALK-6031

- TOP** Fox Georgette with Heavy Embroidery (cut 2.50)
- BOTTOM-INNER** Dull Santoon (cut 4.25)
- DUPATTA** Fox Georgette with Heavy Embroidery (cut 2.40)

### CARE INSTRUCTIONS

- ☐ Dry clean only
- ⚠ Do not use any bleach or stain removing chemical
- ☐ Iron the fabric at moderate temperature
- ☒ Do not dry fabric in direct sunlight

# ZAHRA RUBAB

ALK<sup>®</sup>

AL KHUSHBU<sup>®</sup>



ALK-6030



ALK-6031



ALK-6032