

LILY & LALI[®]
GULS PRIDE
A PRODUCT OF Sfriona[®] GROUP

Mirunal



LILY & LALI[®]
GULS PRIDE
A PRODUCT OF Sfriona[®] GROUP

Mirunal



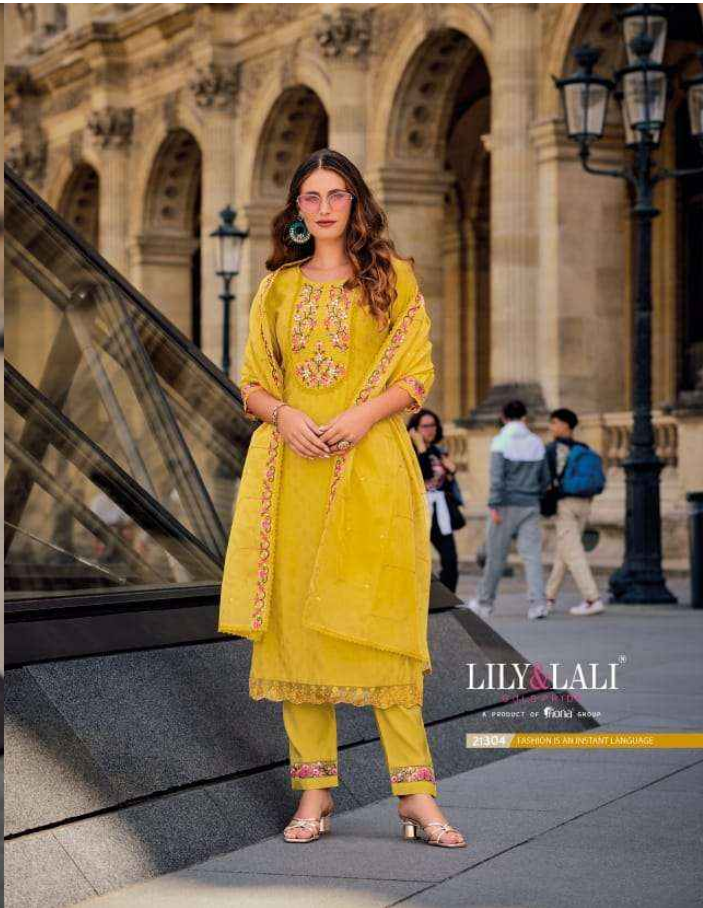


Lily & Lali

LILY & LALI
GULS PRIDE
A PRODUCT OF GULS GROUP

21302 FASHION IS AN EXTENSION OF YOUR PERSONALITY

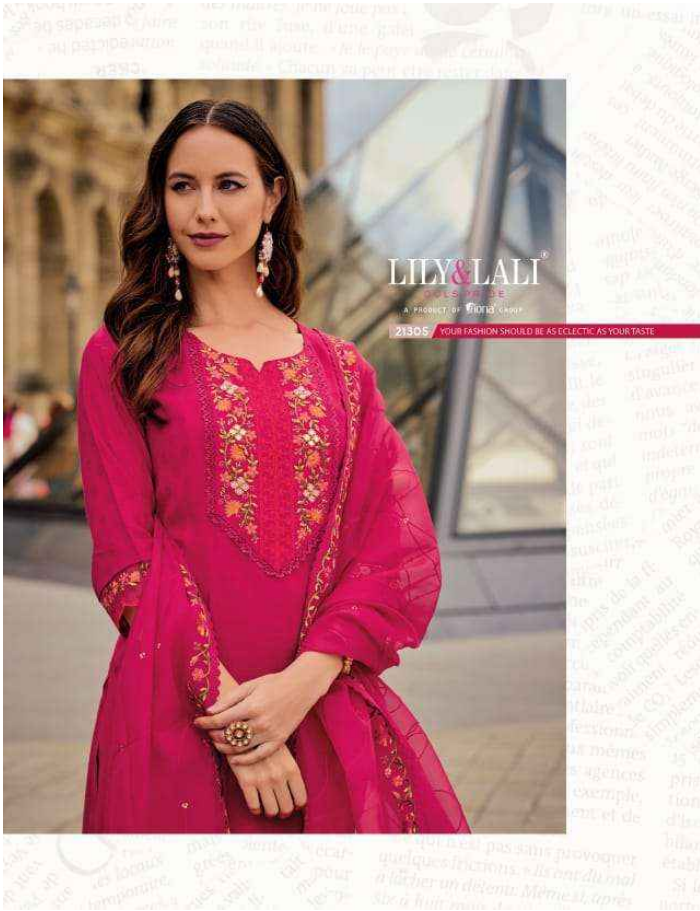
The right side of the advertisement features two smaller images of the woman in the red dress. The first is a close-up of her upper body, highlighting the lace and neckline. The second is a full-body view of her standing on the same city street, showing the entire outfit and her accessories. The background of this section is a light-colored pattern of repeating text in various orientations.



LILY & LALI[®]

A PRODUCT OF THE LALI GROUP

21304 FASHION IS AN INSTANT LANGUAGE







LILY&LALI[®]

UL'S PRIDE

A PRODUCT OF **Prana** GROUP

Mrunal



FABRICS DETAILS

: TOP :

**HANDWORK AND EMBROIDERY ON SELF JACQUARD
SILK WITH COTTON INNER**

: BOTTOM :

PANT ON MILAN SILK WITH EMBROIDERY LACE

: DUPATTA :

**ORGANZA EMBROIDERY DUPATTA WITH
FANCY LACE AND TUSSEL**

: SIZE :

M, L, XL, XXL, 3XL

NOTE : POCKET INSIDE THE PANT



21301 LILY&LALI



21302 LILY&LALI



21305 LILY&LALI



21303 LILY&LALI



21304 LILY&LALI



21306 LILY&LALI

LILY&LALI®

GULSHADE

A PRODUCT OF BRAND GROUP

Mrunal