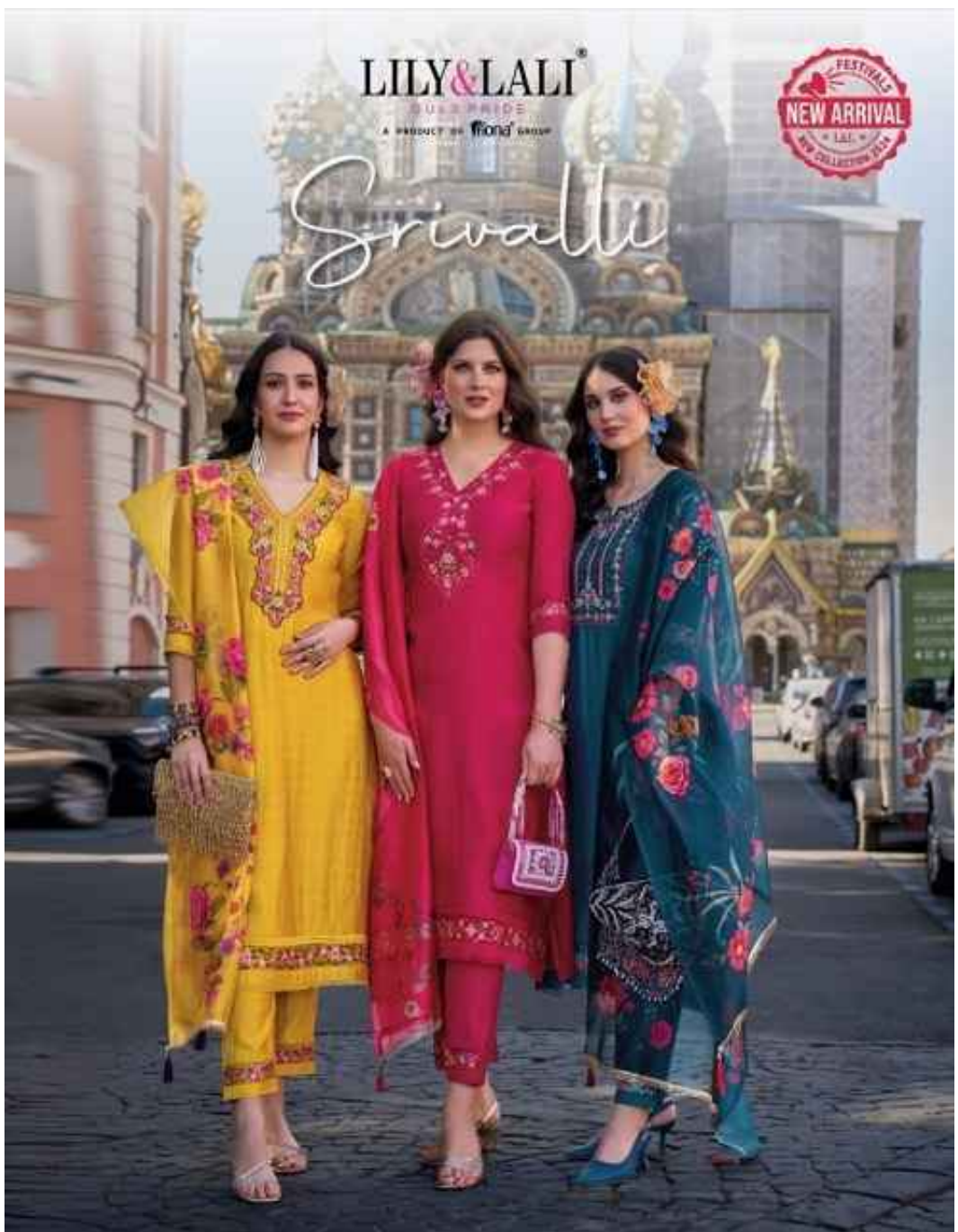


LILY & LALI[®]
GUSA PRIDE
A PRODUCT OF FIONA GROUP

FESTIVALS
NEW ARRIVAL
LALI
THE COLLECTION 2024

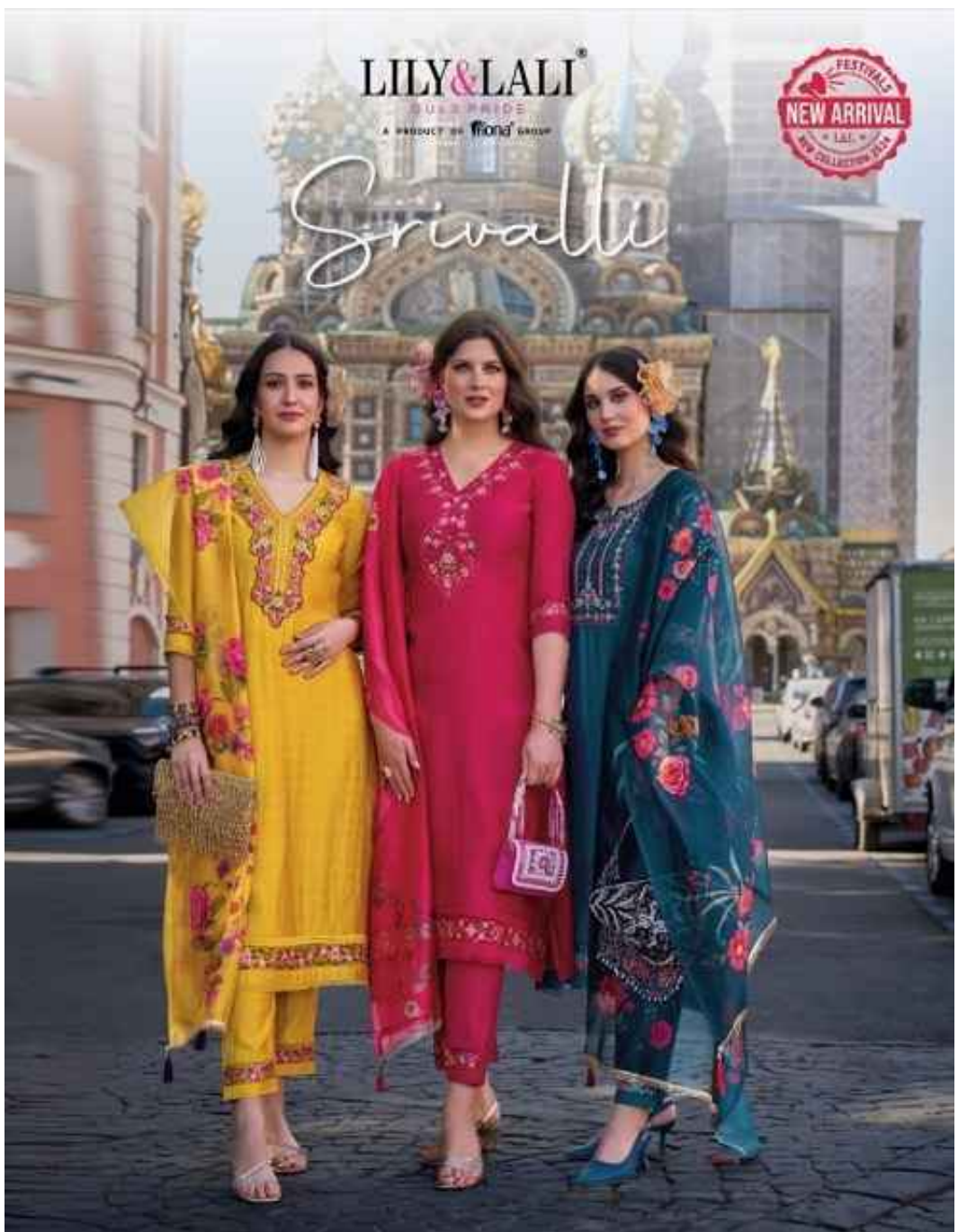
Srivallu



LILY & LALI[®]
GUSA PRIDE
A PRODUCT OF FOND GROUP

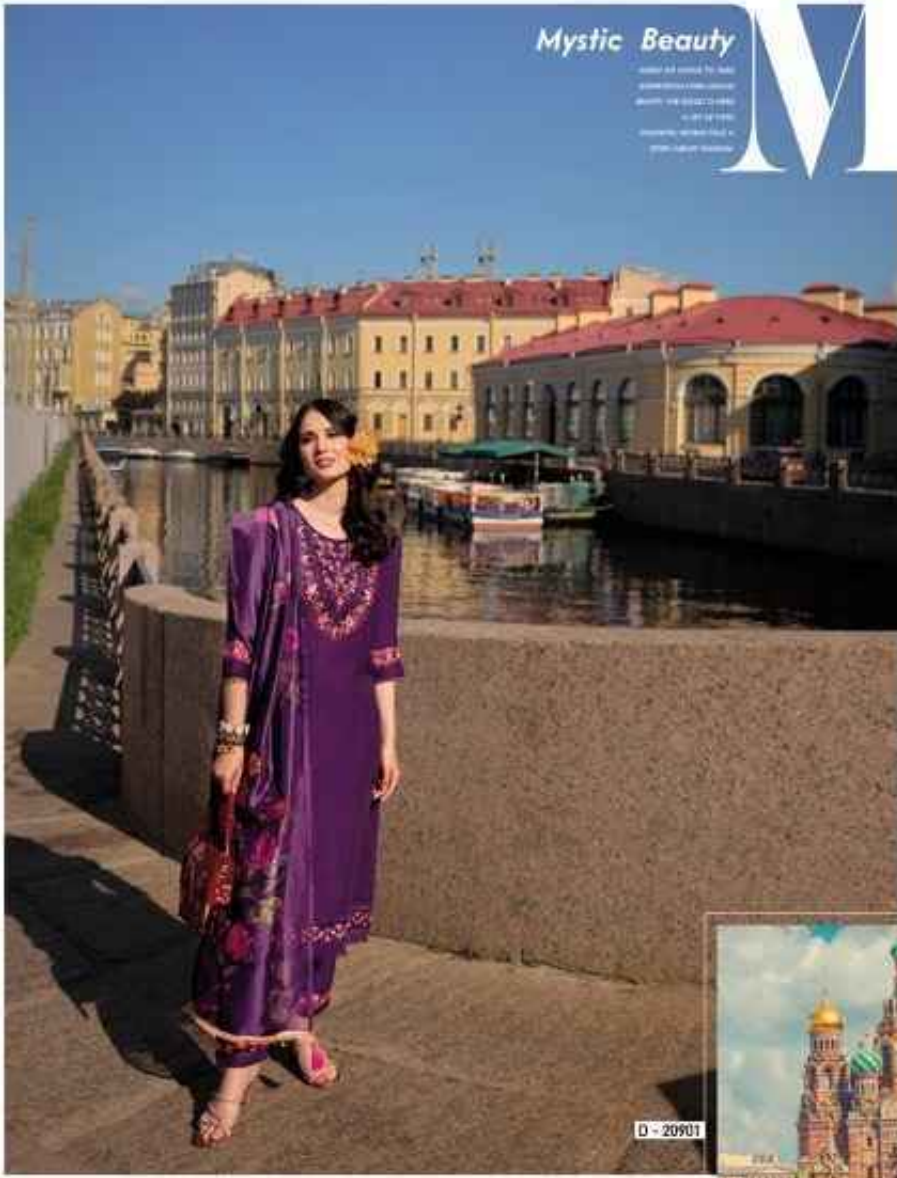
FESTIVALS
NEW ARRIVAL
LALI
THE COLLECTION 2024

Srivallu



Mystic Beauty

Model: 165 cm, 55 kg
Dress: 100% Cotton, 100% Polyester
Length: 140 cm, 120 cm
Sleeve: 3/4
Material: 100% Cotton, 100% Polyester



D - 20901



M

LILY & LALI

A HOUSE OF FASHION

Mystic Beauty

THE
LILY & LALI
Mystic Beauty
Collection
LILY & LALI





0 - 20902

Fresh Look

the classic with
modern style
design and
quality in the
heart





LILY LALI

ESTABLISHED IN 1999



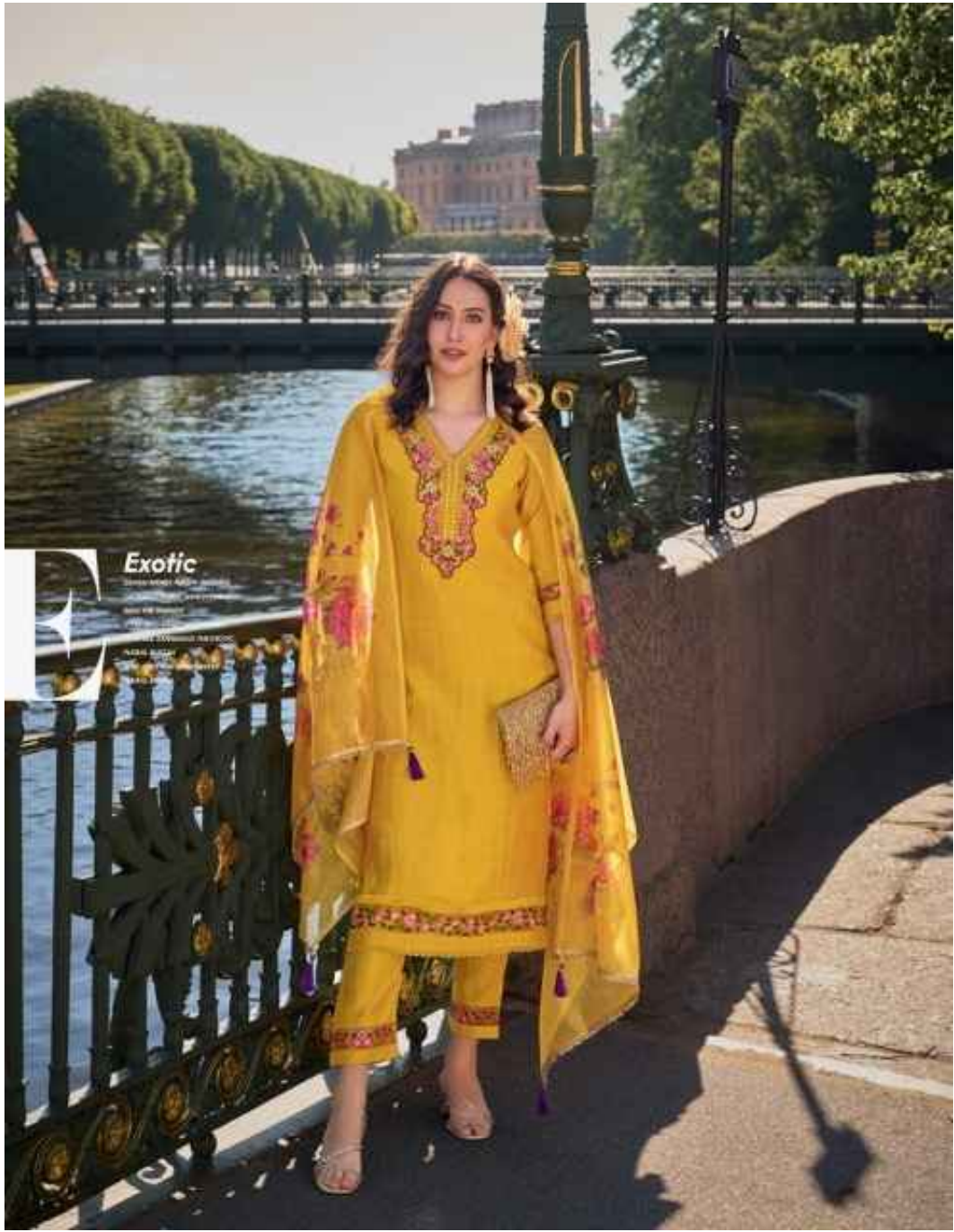
LILY LALI

A BRAND BY SHERI SAJJAD

Fresh Look

PURE SILK AND PUNJABI
CONTEMPORARY PATTERNS
ON LILY LALI FOR THE
GRANDER TO YOUR STYLE.







LILY & LALI

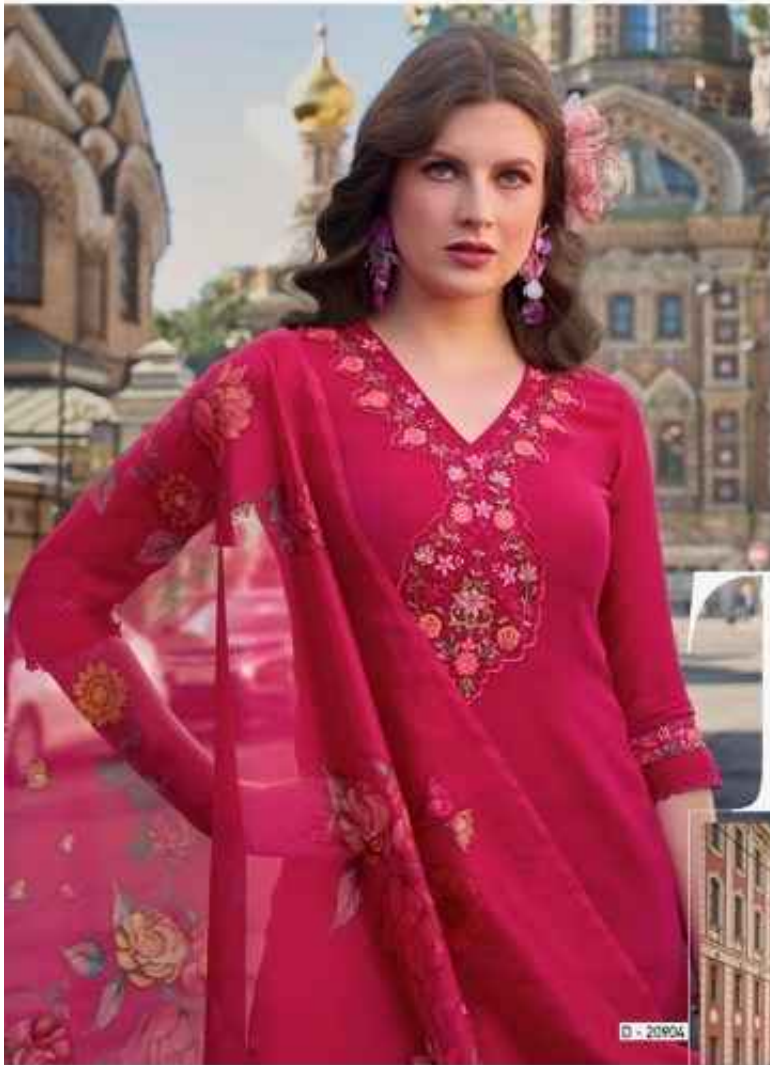
A FAMILY OF FASHION

D - 20903





LILY&LALI[®]
GULSHADE
A PRODUCT OF **WORLD** BRAND



© - 2019/20

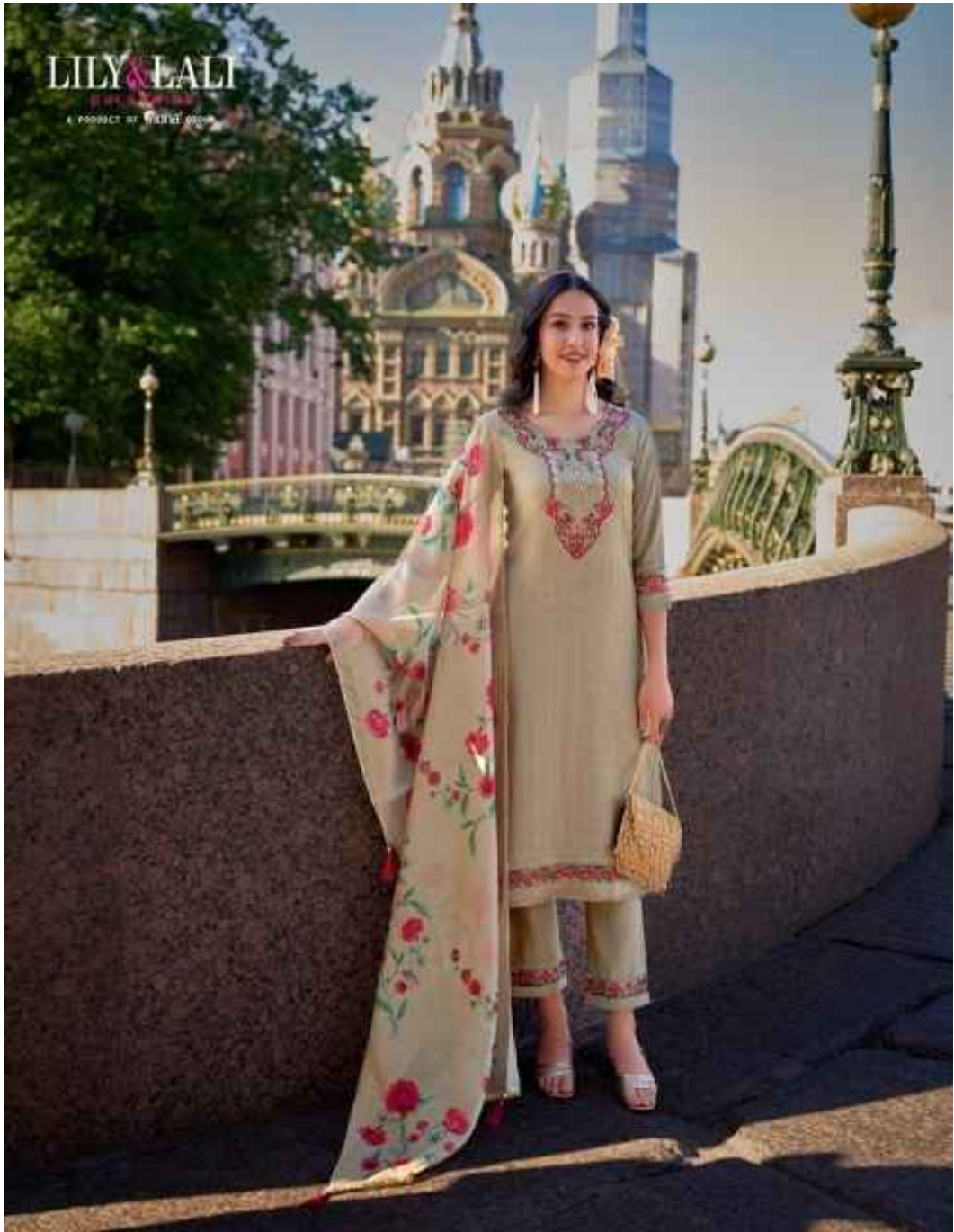
Timeless

© 2019/20
© 2019/20
© 2019/20
© 2019/20
© 2019/20











Mystic Beauty

WITH AN EYE TO THE
CONNECTION WITH NATURE
BEAUTY AND ART IS THE
A SET OF ART
THESE JEWELS ARE A
THE PERFECT DESIGN



D - 20905



Mystic Beauty

www.ayur.com
www.ayur.com

M

Mystic Beauty

DESIGNER: [unreadable]
STYLING: [unreadable]
HAIR: [unreadable]
MAKEUP: [unreadable]
PRODUCTION: [unreadable]

LILY & LALI

a brand by [unreadable]

