

ZAHA
INARA



INARA

ZAHA

D.No.10326

TOP Cambric Cotton With Heavy Embroidery Work

BOTTOM-INNER Semi Lawn

DUPATTA Tubby Silk with Print



ZAHHA





INARA ZAI
TOP Cambric Cotton With Heavy Embroidery Work
BOTTOM-INNER



INARA

ZAHA

D.No.10327

TOP Cambric Cotton With
Heavy Embroidery Work

BOTTOM-INNER Semi Lawn

DUPATTA Tubby Silk with
Print







INARA

TOP Cambric Heavy



INARA

ZAHA

D.No.10328

TOP Cambric Cotton With
Heavy Embroidery Work

BOTTOM-INNER Semi Lawn

DUPATTA Tubby Silk with
Print





INARA ZAI
TOP: Cambric Cotton Weft, Heavy Embroidery Work
BOTTOM: INNER



INARA ZA
TOP - Cambric Cotton With Heavy Embroidery Work
BOTTOM-INI



INARA

ZAHA

D.No.10329

TOP Cambric Cotton With Heavy Embroidery Work

BOTTOM-INNER Semi Lawn

DUPATTA Tubby Silk with Print





ZAHNA



INARA ZAHNA D.No. 10
TOP: Camb... Heavy...
BOTTOM: j... Semi L...
DUPATTA





INARA

ZAHA

D.No.10330

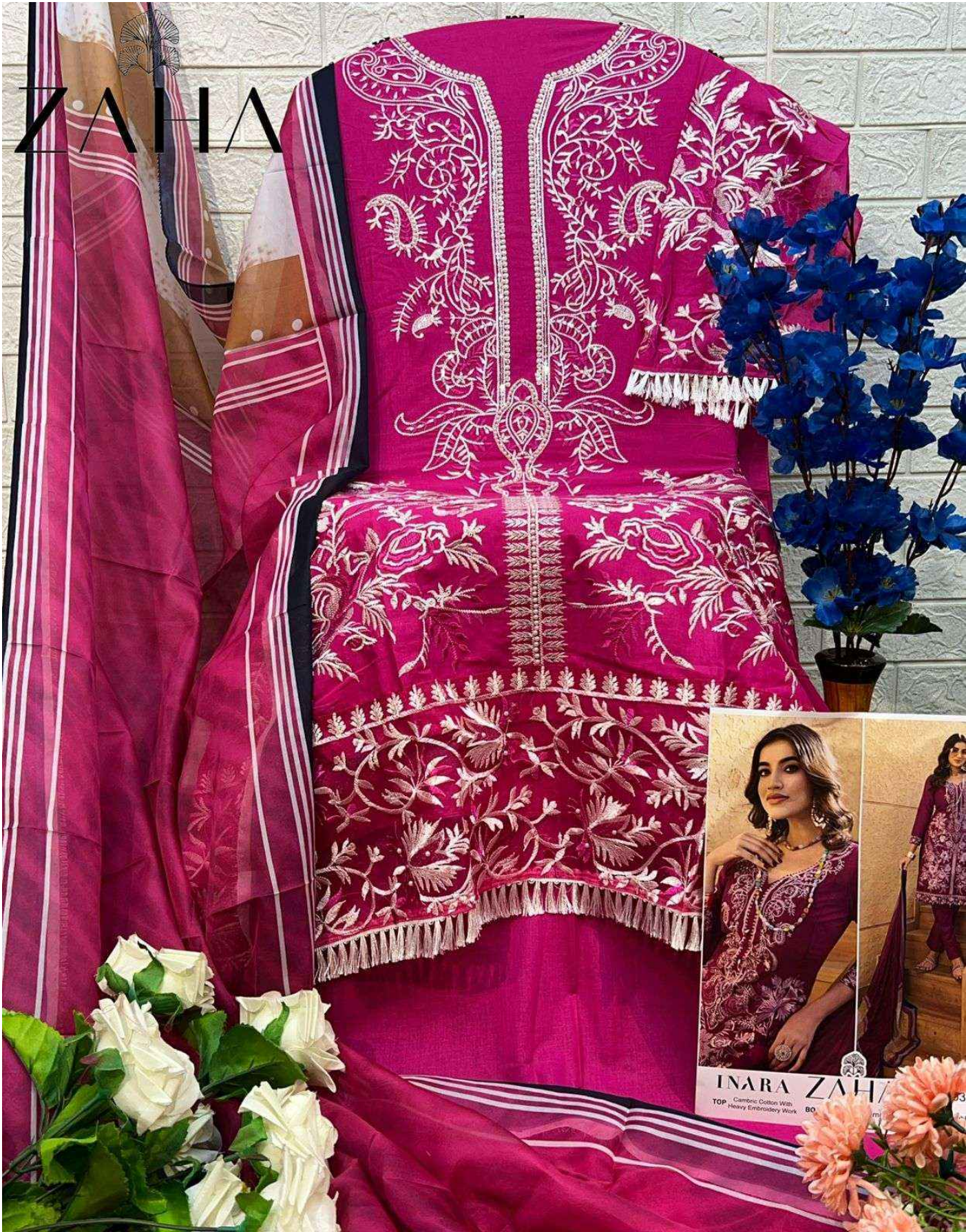
TOP Cambric Cotton With Heavy Embroidery Work

BOTTOM-INNER Semi Lawn

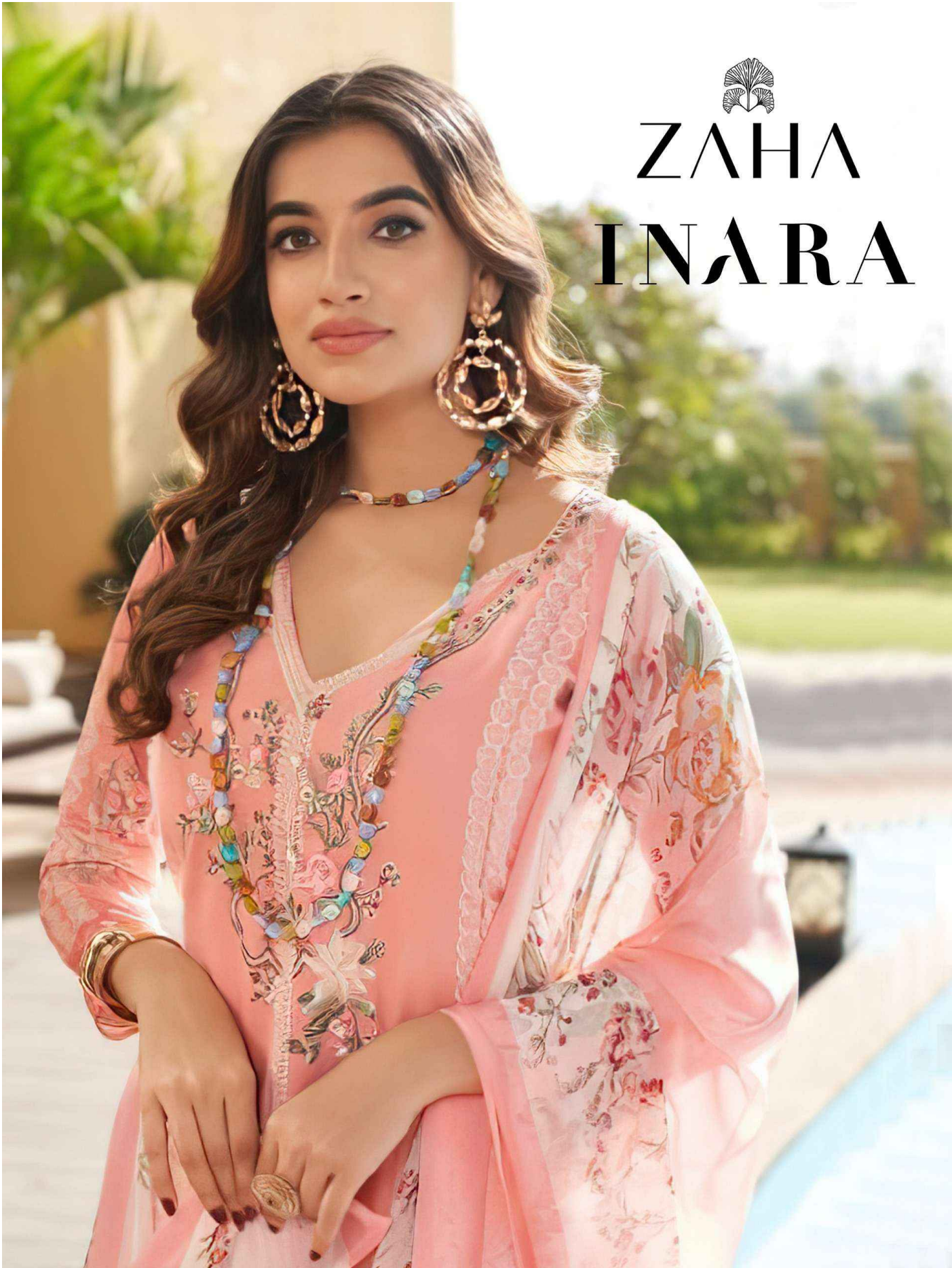
DUPATTA Tubby Silk with Print



ZAHIA



INARA ZAHIA
TOP Cambric Cotton With Heavy Embroidery Work



ZAHA
INARA